



January - April 2018

# discover Rio Vista

**FREE!**

Photo by Jan Vick

## What's Inside:

Wind Turbines	3
LUNAFEST® Movie Magic	5
Mei Wah Beer House	7
Hidden Upriver Wineries	10
Sturgeon Fishing	15



## Give your body a Tune-Up

Look Healthy



Feel Healthy



Be Healthy



2 Great Programs to help you!

### Synergie Aesthetic Massage

FREE TRIAL TREATMENT

925-301-7389 or

SynergieByLO@aol.com

Get rid of cellulite, flabby skin, improve circulation!

### and...Arbonne – 28 day Detox

1. Eat Clean
2. Increase Nutritional Intake
3. Eliminate Allergenic, Addictive, & Acidic Foods
4. Balance Blood Sugar
5. Support Elimination Organs

Appts 7 days a week 528 Birch Ridge Dr. Rio Vista, CA



*Brand Name  
Clothing for  
Every Day of Your Life  
At Prices You Love*

*Men - Women  
& Children  
NB - 4X*

*Angela - Owner  
(707) 374-2000  
299 A Main Street  
Rio Vista, CA 94571  
brandyouconsignment@gmail.com  
<https://www.facebook.com/BrandYouConsignment>  
Hours: Tues - Fri 10-5  
Saturday 10-3*

# STUDIO 114



## By Sandy

Sandy, Susan, Rachel, Janet, Fran

114 Main Street Rio Vista

707 330-5224

Open Monday - Saturday

Call for Appointment

Men, Women and Children

Cuts, Color, Style, Perms  
Nails, Pedicures and Waxing

Walk-ins Welcome

Our Friendly Staff is Always Ready to Help



A Complete Home, Garden, Building  
and Industrial Supply Center

**Oilwell Materials**  
and  
**ACE Hardware**

Owned & Operated by the Dole Family Since 1952

506 HIGHWAY 12 707-374-6434 RIO VISTA

# Wind Turbines

Story by Marilyn Nelson    Photos by Greg Mitchell & Jan Vick

When driving east along Highway 12 as you near Rio Vista, look to your right on the Montezuma Hills and you will see some enormous kinetic sculptures. Sometimes they are erroneously called windmills, but they are really wind turbines. There are currently over 750 of them that belong to three renewable energy projects (Shiloh Wind Power Plant, FPL Energy's High Winds Energy Center and one owned by the Sacramento Municipal Utility District). There are even plans to build 200 more wind turbines in the area.

Wind flow patterns and speeds vary greatly across the United States. The wind is also modified by bodies of water, vegetation, and differences in terrain. That is why the terrain greatly affects the placement of the wind turbines. The ones near Rio Vista are on hills in a naturally windy area that provides an optimum location. By grouping these large turbines together into wind farms, they become more cost effective by providing bulk power to the electrical grid.

The terms "wind energy" or "wind power" describe the process by which the wind is used to generate mechanical power or electricity. People have been using the power of the wind for over a thousand years. The earliest devices were windmills that were used to pump water and crush grain. The windmills have evolved now into wind turbines that convert the kinetic energy in the wind into mechanical power using a generator to produce electricity. The turbines can generate enough electricity to power entire towns.

Wind turbines operate on a simple principle, the energy in the wind turns the three propeller-like blades around a rotor. The rotor is connected to the main shaft, which spins a generator to create electricity.

The turbines need to face into the wind. Since the wind direction changes, there is a velocity sensor sitting on top

of the turbine to measure the wind speed and direction. This sends a signal to a yawing mechanism that aligns the turbine with the wind direction. The three blades are also aligned with the optimal angle with the wind flow.

Why three blades on the propeller? Each blade produces more power, so four blades would be preferred if it weren't for the cost. The addition of a fourth blade would increase the cost so much that the profit would not outweigh the revenue. Why not a less expensive two-blade turbine then? For a two-blade design to match the power of the three-blade design, the length of the cord of the blade would have to be doubled. Again, this would increase the cost so much that it would be pointless. The rotation of two blades could be increased to match the output of the three-wing design, but spinning faster is a negative. A faster spinning blade would create more noise, so people would not want to live anywhere near them. Therefore, the three-blade design is the optimum choice – not too much and not too little.

The electricity produced in wind turbines is transported to the consumer via a series of transmission and distribution networks. Each component of the network changes the voltage of the electrical power to optimize its transition to the next part of the network. Due to the structure of these networks it is currently not possible to buy wind energy alone. All sources of electricity feed power into the same grid. It is therefore impossible to know exactly where the power you are buying comes from.

It is difficult to comprehend how immense these amazing "sculptures" are when you see them from the highway. If you would like to see them up close, drive down Main Street in Rio Vista and turn right

onto 2<sup>nd</sup> Street. Follow 2<sup>nd</sup> out of town where it becomes Montezuma Hills Road. As you continue on the road you can see the wind turbines fairly close up so that you can get an idea of their size. As a point of reference, the towers are slightly taller than the Statue of Liberty!

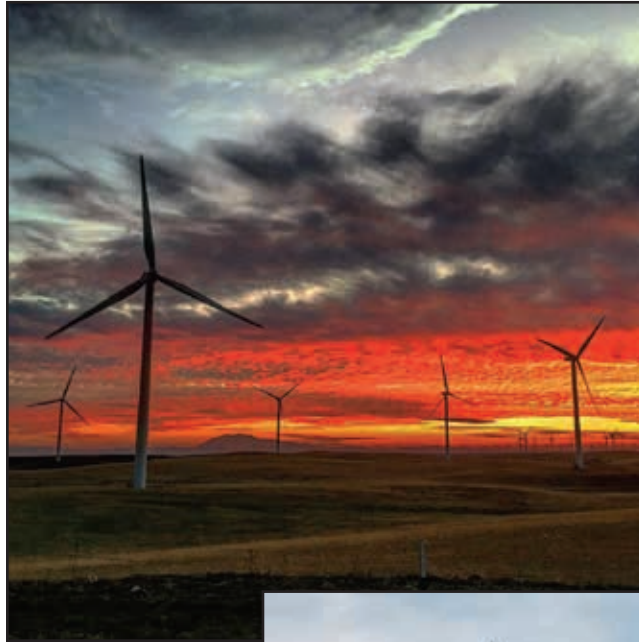
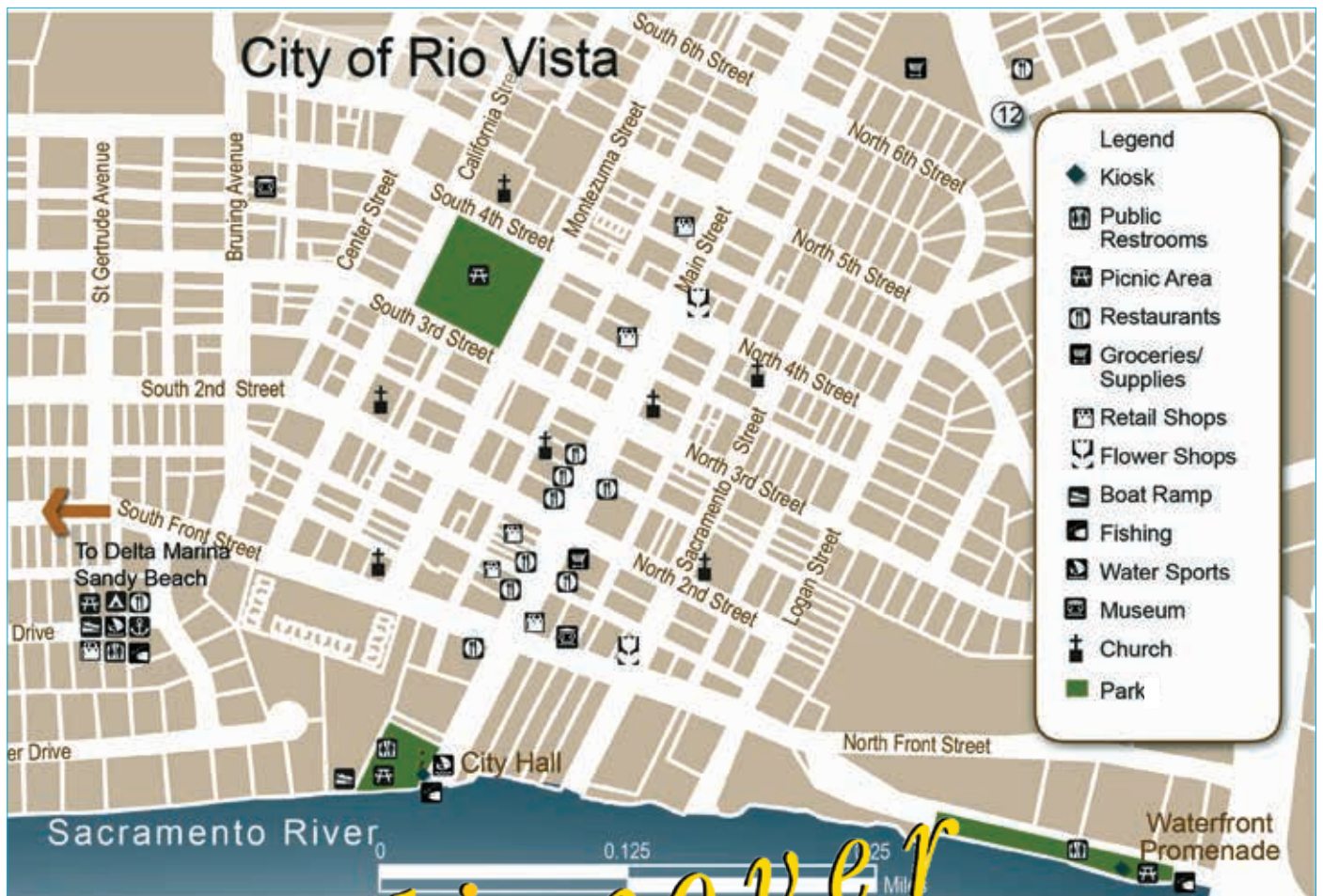


Photo: Greg Mitchell



Photo: Jan Vick





# discover Rio Vista

*Discover Rio Vista* is a tri-annual magazine published by the RioVision Promotions and Communications team that provides information about events, activities and places of interest in and around Rio Vista.

## January - April 2018 Edition

### Editor: Susan Whitesell

[tapestryt@comcast.net](mailto:tapestryt@comcast.net)

### Asst. Editor: Jan Vick

[seawingjan@gmail.com](mailto:seawingjan@gmail.com)

### Advertising:

Carolyn Azbell

[azbellc@ymail.com](mailto:azbellc@ymail.com)

Laurie Oleksiewicz

[MinmayInc@aol.com](mailto:MinmayInc@aol.com)

Sandy Angus

[sandrasangus@yahoo.com](mailto:sandrasangus@yahoo.com)

### Writers & Contributors

Dorothy Fest

Lee Ann Frable

Drew Gidlof

Teri Malkin

Marilyn Nelson

Edwin Okamura

Laurie Oleksiewicz

Phil Pezzaglia

Jan Vick

Susan Whitesell

### Reviewers

Suzi Cassone

Maryanne Mowat

Cyndy Schroeder

Tom Surh

Jan Vick

Robie Williams

### Photographers & Artists

Matt Burt

Greg Mitchell

Linda Solomon

Jan Vick

See the *Discover Rio Vista* website at: <http://discoverriovista.com>. For additional information about RioVision see: <http://riovistavision.com> and [www.facebook.com/riovistavision](http://www.facebook.com/riovistavision). RioVision is a non-profit 501(c)(3) group. Donations are tax-deductible.

**ON THE COVER:** Photographer and Assistant Editor Jan Vick captures the beauty of wind turbines amidst a field of safflower in bloom.

**RioVision**  
bridge to the future





Have you ever dreamed of attending Cannes Film Festival in France or the Sundance Film Festival in Utah? LUNAFEST® may very well give you that same experience, while benefiting the lives of women and girls right here in our own community. On March 3rd, the members of Soroptimist International of Rio Vista transform the Veterans Memorial Hall to host this national film festival of short films by, for, and about women.

Last year's event was a sell out! This year, to accommodate as many as possible, there are two showings, however, tickets are limited – so purchase your tickets early from any Soroptimist member, at Books Rio V and Pets 4 All downtown, or online at [https://lunafest\\_rv\\_2018\\_matinee.eventbrite.com](https://lunafest_rv_2018_matinee.eventbrite.com) or [https://lunafest\\_rv\\_2018\\_evening.eventbrite.com](https://lunafest_rv_2018_evening.eventbrite.com).



Both the 1:00 pm and 6:00 pm showings kick off with a reception including a no host bar, appetizers, and a raffle for amazing prizes, such as a Wine Tour for Two to Napa, Sonoma or the Russian River! Each showing is unique – the matinee includes a Fashion Show at intermission. During the evening intermission the Soroptimists recognize local recipients with the Violet Richardson, Ruby, and Live Your Dream Awards, honoring women from the community as leaders and contribute to further their education.

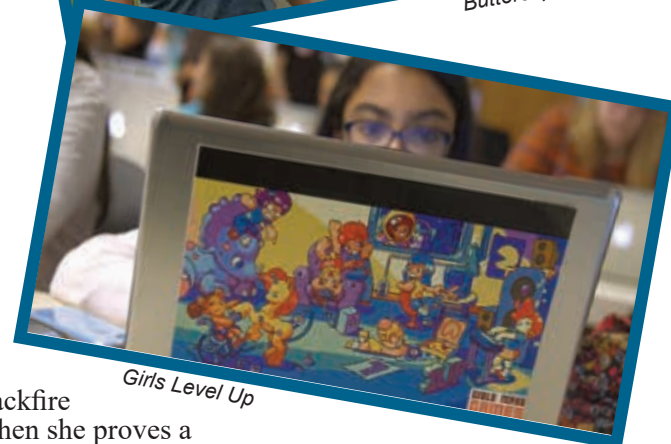
The film festival showcases the work of a diverse array of talented women filmmakers with intelligent, funny and thought-provoking themes.

This year's program includes:

**“Buttercup” by Megan Brotherton** – The story of best friends supporting each other. As Maggie struggles with her mother's death a surprise visitor helps her find joy again.

**“Girls Level Up” by Anne Edgar** – A young Pakistani women who grew up in a conservative Muslim neighborhood in the Middle East helps middle school girls in Silicon Valley realize their dream of designing their own video game.

**“Toys” by Amanda Quaid** – In 1930s farm country, a father wants a son, but he gets a little girl. He tries to toughen her up by giving her toys intended for boys. His efforts



backfire when she proves a little too capable for comfort.

**“Fanny Pack” by Uttera Singh** – A comedy about a young Indian-American woman who wants to follow her dreams and a fanny pack-clad Indian father who chases his daughter through an airport hoping that she will follow his.

**“Joy Joy Nails” by Joey Ally** – In an upmarket Connecticut strip mall, Korean Sarah manages a Korean-owned nail salon with an ever cheerful, K-pop pumping, manicured iron fist. When Chinese Mia starts training as a manicurist, and looks to be stealing the boss's son's affections, Sarah gets her claws out — only to discover the terrible truth under the varnish at Joy Joy Nails.



# CARE King of the Kitchen

## Cooking and Tasting for a Great Cause!

Story by Lee Ann Frable & Susan Whitesell

Saturday, March 10th, at the Veterans Hall at 610 St. Francis Street, join CARE for the third annual King of the Kitchen event. This is a fundraiser for Rio Vista CARE, an important local nonprofit assisting families and individuals in times of crisis.



Menfolk, King of the Kitchen is your chance to prove your cooking, baking and food preparation prowess. Prepare a dish to be sampled by attendee "tasters." A "sample" is about a tablespoon. Prepare your very own specialty dish, be it appetizer, salad, bread, soup, dessert, meat, fish, chicken or even a casserole. Your contribution is your talent, and of course, the ingredients. Expect up to 120 tasters, enjoying and voting for their favorites... maybe yours!

Tasters, this is your opportunity to sample wonderful food for a great cause and vote to crown one lucky and talented chef!

Monies raised benefit Rio Vista CARE's much needed programs that are offered to the community. Rio Vista CARE is a regionally based nonprofit counseling and family resource center in Rio Vista. CARE clients are children, families and individuals who live in the small Delta towns of Rio Vista, Isleton, Walnut Grove, Birds Landing and Collinsville and surrounding rural areas. CARE, the Delta's only low-cost, professional counseling and family resource center, has served this vast community of 10,000 people for over 30 years.

Join CARE for a fun filled evening! BYOB. Tickets are \$30.00 or \$25.00 with a donation of a non-perishable item for the Rio Vista Food Pantry. Call (707) 374-5243 for

tickets or get them at the CARE office at 628 Montezuma Street (corner of 7th and Montezuma). For additional information, please contact the CARE office at (707) 374-5243 or Lee Ann Frable at (484) 707-0935.

### WILLIAMS MOBILE SERVICE, INC



Lee Williams, Owner  
3047 Cattey Lane  
Rio Vista, CA 94571  
Phone: (707) 374-2717  
Fax: (707) 388-8321

24-Hour Service

*Fleet Service ~ BIT Inspection ~ PM Service ~ Trailer Repairs  
Welding ~ Springs ~ Electrical ~ Air & Electric Brakes ~  
Cryogenic & CO<sup>2</sup> Repair*

### RI VISTA TIRE

Lee Williams, Owner  
3047 Cattey Lane, Rio Vista, CA 94571  
Phone: (707) 374-6000; Fax: (707) 374-2763  
email: riovistatire@yahoo.com

24-Hour Road Service



203 2nd Street  
Isleton, CA 95641  
(916) 777-6004  
www.peterssteakhouse.net/  
peterssteakhouse@frontier.com

### Pineapple Restaurant

LUNCH DINNER TO GO

Sun - Fri 11:00am to 9:00pm  
Sat 4:00pm to 9:00pm



22 Main Street  
Isleton, CA 95641  
(916) 777-6294



# Mei Wah Beer Room

*Come for the beer... stay for the community*

Story by Susan Whitesell    Photos by Matt Burt

The venerable Mei Wah building, located in historic downtown Isleton, was reopened in October 2017 as a beer tasting room. Originally a Chinese gambling hall, brothel, and opium den, the Mei Wah Beer Room features 24 rotating taps highlighting mostly local craft beers as well as draft kombucha and nitro coffee.

Owner operator Iva Walton frequented the Delta since the mid 80's, enjoying the marvelous motor biking and bird-watching in the area and had long admired the historic buildings in downtown Isleton. About two years ago, Walton decided finally to settle in Isleton and start her business. Having been a craft beer enthusiast for over 30 years and wanting a break from her job in the trades, Walton purchased the Mei Wah building in 2015. She spent the next year renovating the historic space.

Walton's theater arts background is evident throughout the beer room – the interior boasts bright authentic colors and decorative details as well as fine old photographs and graphics relative to the area and the building's intriguing history. The entry way features hundreds of vintage photos of opium dens, historic Isleton, and people drinking beer from the 1800's onward. An antique opium bed is now an intimate seating area. The bar boasts a one-of-a-kind cast iron 24 tap draft tower on top of a Chinese altar from the 1800's. The retro diner counter was built for the 1992 movie Basic Instinct starring Sharon Stone and Michael Douglas, (which was filmed in part at this location). Don't miss the bathroom decorated with Chinese dragons and flickering lights.

Walton considers herself a beer curator, creating her menus based on her experience of the beer, tasting, knowledge of the brewery, as well as reviews and recommendations from other people. Menus include information about the brewery, style and alcohol content. Choosing a beer flight is a great way to explore the local beers. Walton recommends tasting "flights" of four based

on your personal beer preferences. She even has a flight called "I Hate Beer" for beer agnostics. Regular rotation of the taps ensures a different experience every time you go.



*The antique opium bed, now a seating area*



*Owner Iva Walton at the taps*

The Mei Wah Beer Room also features a few other specialty drinks including draft kombucha and nitro coffee. Along with the beer, Walton regularly rotates her kombucha and coffee recipes. Kombucha, is a fermented drink made with tea, sugar, bacteria and yeast. Proponents claim that kombucha helps prevent and manage a variety of health conditions. Even kids can drink the brew. Perfect for hardcore caffeinated types, cold brew

coffee infused with nitrogen creates amazing coffee that tastes as if cream and sweetener have been added. The system also infuses the coffee with gases, so it develops a foamy, creamy head, much like the one on a pint of Guinness.

Visitors to the Mei Wah rave about the personable and knowledgeable host, lovely authentic Chinese decor (true to the early history of Isleton), vintage background music, and most of all, the sense of community. Visitors may bring in their own food (including delicious entrées from the nearby BBQ or Chinese restaurants), while enjoying the enormous selection of brews, draft nitro coffee and kombucha. Children and pets are welcome.

Located at 35 Main Street in Isleton, California, the Mei Wah Beer Room is open Thursday, 4:00 pm - 8:00 pm, Friday, noon - 8:00 pm, and weekends noon - 8:00 pm and can be reached by phone at (916) 777-6688.



*People and pets enjoying the Mei Wah Beer Room*

Downtown Isleton is a wonderful area to explore and loaded with history dating back to the late 1800s. The downtown has many preserved 19th-century era storefronts along its main street. Some, like the Mei Wah building, show distinct Chinese influences. Isleton is a short six mile drive from Rio Vista up

Highway 160. Arrive early in the day to see everything and to explore, and be sure to visit the Mei Wah Beer Room!



## Rio Gift And Souvenir Company

20 North Second Street  
707-374-6700

Open Monday through Saturday, 10 to 5



Gifts for All Occasions

Souvenirs of Rio Vista,  
the Delta, and California

Jewelry, Home & Garden  
Decor, Greeting Cards,  
Plants, Godiva Chocolates,  
and other Gourmet Snacks

We feature a  
large selection of Art,  
Jewelry, Cards and  
Specialty items  
from local artists and  
collectors



Clothing by Jess and Jane

Delta Marina  
Yacht Harbor &  
RV Park

Nestled at the end of the  
busy Delta Marina is the  
small, shaded RV park.

100 Marina Drive, Rio Vista  
707-374-2315



We have 25 RV sites,  
including 13 on the water.  
Full hookups.

Relax by the Sacramento  
River with views of the Rio  
Vista bridge, catch dinner  
at the fishing pier, shop at  
the Marina gift shop or dine  
waterside at the Point  
Restaurant.



Open 7 days a  
week

## Thinking of Buying or Selling?

Call (707-344-1139)

[cliff@mogaheyrealestate.com](mailto:cliff@mogaheyrealestate.com)

Your Local Realtor



# Cliff McGahey

Cal BRE #01428614

## Delta Pharmacy



Prompt, Accurate Prescription Service

Most Insurance Accepted  
Generic Drugs Available ~ Ask our Pharmacist

# 374-5135

407 Main Street  
Rio Vista, CA

MON-FRI: 9 AM - 7 PM  
SATURDAYS: 9 AM - 5 PM  
CLOSED SUNDAYS



Extensive Gift Shop  
Large Hallmark Card Section  
Free Gift Wrapping  
Delivery Available





# Spotlight On Spinner Mortgage

By Edwin Okamura & Laurie Oleksiewicz

*Welcome to "Spotlight On," your chance to learn about some of Rio Vista's unique businesses, and the people who own and staff them.*

Usually, we feature owners of store-front establishments, but others are an important part of this community as well. One such business is Edwin Okamura of Spinner Mortgage. Since moving to Rio Vista, Edwin has actively supported this city. From the beginning, he assumed a key role in RioVision, becoming involved with the Regional/Urban Design Assistance Team (R/UDAT) program.



"The experience was transformative for me, as I realized how much could be accomplished in our town," Edwin declared. "While Rio Vista may lack services that larger cities become accustomed to...it's more than made up for with a community that volunteers hours and [donates] dollars to pick up any shortfalls. While there are benefits to being anonymous in a big city, there is so much more to be said for participating and making a difference." Edwin is a member of Rio Vista Rotary, Chair of Rio Vista's Planning Commission, and on the Board of RioVision.

Born in Berkeley, California, Edwin graduated from San Francisco State University with a Bachelor of Science degree in business, with an emphasis on marketing and advertising. He met his wife, Vera Sunada, in 1992 during her final year of dental school. Before acquiring her dental practice in Rio Vista, they lived in Kensington in the Bay Area and in Davis.

Edwin's career in the marketing industry kept him busy and away from home much of the time. But, in 2013, he sold his business, as he was ready to simplify his life

and be closer to home. He considered launching another marketing company when a close friend suggested he join him in his mortgage brokerage. His friend had built a well-respected firm during the course of a 25 year career, and he convinced Edwin that he (Edwin) would basically be running his own business, setting his own hours and operating from anywhere he chose. When looking at this growing city, Edwin realized a void existed. This community needed unbiased advice they could trust and reputable lenders who were competitive. He stated, "My biggest threat would be retail banks and online lenders; but given my rates would be competitive, and my 24/7 services could not be touched, I recognized a huge opportunity. Now, four years later, I'm continuing down a path that gives me fulfillment in knowing that I am providing a valuable, much needed service in Rio Vista."

Indeed, this is a unique town, filled with many businesses administered by strong supporters of the community. Edwin Okamura of Spinner Mortgage is just one of them.



**30 WHOLESALE MORTGAGE LENDERS**

**EDWIN A. OKAMURA**

*"Mortgages for Rio Vista and the Delta"*

**CALL: 707.375.0088**

**Edwin@spinnermortgage.com**

License BRE#01946726 NMLS #1133843 



# Hidden Upriver

## Off the beaten track but

By Jan Vick & Susan Whitesell

Established as an American Viticultural Area, or appellation, in 1985, the Clarksburg AVA located in the Sacramento-San Joaquin River Delta, boasts a cool maritime climate and fertile, low-draining soils that enable the little wine region to produce 45,000 tons of grapes each year. The area has been statistically identified as comparable to the best wine grape regions in California (Napa, Sonoma, Paso Robles) in terms of degree days and day to evening temperatures. The AVA touches three counties – Sacramento, Solano and Yolo and includes over 64,000 acres. Cool evenings and warm days with limited summer fog enable the AVA to grow a diverse portfolio of premium grapes and wine. The area is known for a range of both red and white grapes that produce excellent stand-alone wines, but also excel as blending varietals.

Here are a few wineries in the Clarksburg area that you may never have heard of in one of California's most overlooked wine regions.

The tasting recommendations for Miners Leap and Julieta wineries are from San Francisco Chronicle writer Stacy Briscoe, reprinted from her March 16, 2017 online article, *Clarksburg AVA the little wine-growing region that could*. Read the full article at <http://www.sfchronicle.com/travel/article/Clarksburg-AVA-the-little-wine-growing-region-11007591.php>

### Miners Leap

Miners Leap winery at 54250 South River Road on the Sacramento River, couldn't be more scenic. The grounds feature a century-old rustic barn and beautifully landscaped grounds, with a wonderful view of the surrounding vineyards and the distant coast range.

Miners Leap is a boutique winery, producing over 13 varietal wines in small lots, rarely over 100 cases each.

The century-old barn that sits on the property houses the indoor-outdoor tasting room. It's eclectically decorated with art from Cabo San Lucas and "Hotel California" memorabilia. The outdoor tasting room can be a bit chilly, especially in winter. Grab one of the many wool blankets that are set out for just such an occasion.

A recent addition is the event space just a few yards from the tasting room that accommodates up to 500 guests. And don't forget to pack a picnic. The site has many inviting tables to use at your leisure. Miners Leap is family and dog friendly. The outdoor setting is the perfect place for both two and four legged friends to spend a day.

**Wine to try:** 2014 Pinot Noir. Miner will be proud to tell you that Clarksburg is a successful producer of Pinot Noir. The constant delta breeze keeps these thin-skinned grapes cool even in the summer sun. Those most familiar with Napa and Sonoma's take on the varietal shouldn't miss out on Clarksburg's expression.

5420 South River Road, Clarksburg; (916) 882-1000. [www.minersleap.com](http://www.minersleap.com). Tasting room hours: Friday Noon – 7:00 pm Saturday and Sunday Noon – 6:00 pm. Fee: \$5.



Miners Leap front gate

### Julieta Winery

This little hidden jewel is a little off the beaten path at 51221 Clarksburg Road, off South River Road, the main road that leads tourists in and out of Clarksburg.

Julie and Craig Russell are new kids on the Clarksburg block, having officially opened their winery just over three years ago.



Miners Leap outside tasting area



# Wineries well worth the effort!

Photos by Jan Vick

Craig's mother, Beverly, encouraged the couple to transform a formerly unplanted 12-acre lot with an old barn used for storage, into a winery.

Walls of the quaint tasting room are decorated with works by local artists. The Russells are often behind the bar, greeting regulars by name. Comfortable lounge chairs and sofas invite you to linger with your wine. Outside, a new outdoor tasting area beckons. The winery has beautiful landscaping and several indoor and outdoor patios to enjoy a nice Delta breeze. Visitors can enjoy the bocce ball court, putting green and picnic area. The tasting room often features live music on Fridays and Saturdays.

**Wine to try:** 2015 Chenin Blanc. Visiting Clarksburg means visiting one of the few California regions where Chenin Blanc still thrives. Julietta Winery's interpretation is a perfect balance of crisp acidity, subtle fruit aromas of apples and pears, and an almost creamy mouthfeel that gives the wine an enjoyable weight and body.

51221 Clarksburg Road, Clarksburg; (916) 744-9090. [www.juliettawinery.com](http://www.juliettawinery.com). Tasting room hours: 11:00 am – 6:00 pm Friday – Sunday. Fee: Flight of 5 wines \$10, tasting fee waived with purchase of bottle.



*Julietta tasting room outside*

Skylar Stanley. The barrel room is behind the main tasting room and is set with tables for events and tastings. The winery is surrounded by extensive lawns and a large patio, welcoming events and parties.

**Wine to try:** 2014 Fiano. The Fiano, in particular, is a less well known wine as the grapes came originally from Southern Italy and are not

growing grapes for 45 years, and bought the vineyard around the winery in 1996. Their first commercial wine, Sutter Island Red, was bottled in 2007. In 2012 they began to produce varietal wines, with the grapes crushed in Lodi as they developed the new winery and tasting room.

Wines are produced now at the beautiful new facility in Walnut Grove. All wines are estate grapes, and include 13 varietals or blends.

The tasting room has a two story rock wall with the space lined with paintings by the late Marty Stanley, a well known artist, and photographs by his son,



*Julietta tasting room inside*

often grown in this area. It has a smooth, luxurious, rich earthy flavor with hints of butterscotch and date.

12484 Highway 160, Walnut Grove; (916) 775-2111. [www.grandislandvineyards.com](http://www.grandislandvineyards.com). Tasting room hours: 10:00 am – 5:00 pm Friday – Monday. Fee: Wine tasting is complementary.

## Grand Island Vineyards

Another recent addition to the Clarksburg AVA is Grand Island Vineyards located on Grand Island at the junction of Steamboat Slough and the Sacramento River. The Salman family has been



*Grand Island tasting room outside*



# LUNAFEST® 2018

Continued from page 5



Toys



Fanny Pack



Joy Joy Nails



Jesszilla



Yours Sincerely Lois Weber

**“Jesszilla” by Emily Sheskin** – Jesselyn “Jesszilla” Silva is serious about boxing, and at 10 years old trains seriously with dreams of becoming a professional fighter. Her father, Pedro, finds himself caught in between supporting her dream and worrying about her future as she tries to master a combat sport.

**“Yours Sincerely, Lois Weber” by Svetlana Cvetko** – A tribute to the highest-paid silent film director at Universal Studios in 1916.

**“Waiting for Hassana” by Ifunaya Maduka** – In 2014, the extremist organization, Boko Haram, kidnapped 276 teenage girls from a town in northeastern Nigeria. Waiting for Hassana is a harrowing first-person account of one girl’s escape from captivity and a heart-wrenching lament for her closest friend Hassana — one of the many girls still unaccounted for.

**“Last Summer in the Garden” by Bekky O’Neil** –

Recounts one woman’s journey through a joyful, fearful time of death and rebirth.



Waiting for Hassana



Last Summer in the Garden

Soroptimist International of Rio Vista proudly partners with LUNA®, the first nutrition bar for women as their missions

are closely aligned. Soroptimist provides women and girls the resources and opportunities to reach their full potential and live their dreams and improves the lives of women and girls through programs leading to social and economic empowerment. According to Stacia Olson, chair of this year’s festival, “The amount of money we raised last year made a huge impact in the number and size of the scholarships we were able to award and we are excited and honored to be chosen for a third time and make this an annual event.”

Don’t miss these amazing films, recognizing, celebrating, and honoring women in our community and in the world! It’s sure to be the talk of the town! Learn more about LUNAFEST® at [www.lunafest.org](http://www.lunafest.org). Look for more details closer to March 3rd at <http://siriovista.org>, or on FaceBook at <https://www.facebook.com/pg/Soroptimist-International-of-Rio-Vista>. Businesses interested in sponsoring the event or donating raffle prizes please contact Stacia Olson at [s.olson@californiadeltaliving.com](mailto:s.olson@californiadeltaliving.com).



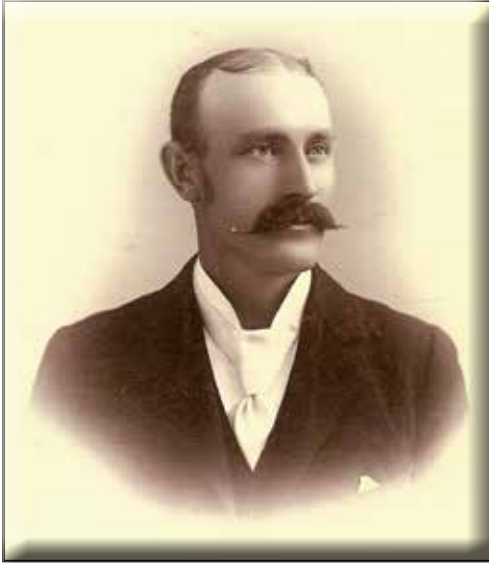
# Historic Homes of J.P. Mortensen

By Phil Pezzaglia    Photos from the Rio Vista Museum

*Rio Vista historian Phil Pezzaglia completes his two-part series on noted architect and builder J.P. Mortensen. The installment in our last edition covered J.P. Mortensen's early life and career. This second and final installment covers his accomplishments from the 1930's on.*

## 1920-1930

In the early 1920's a map was drawn up for a new subdivision at the south end of town, in block numbers 44 and 45. The Mortensen & Dalton Tract No. 1 consisted of 28 lots, ten of which fronted the east side of Front Street, three fronted Hamilton Avenue and



*J.P. Mortensen (1865-1955).*

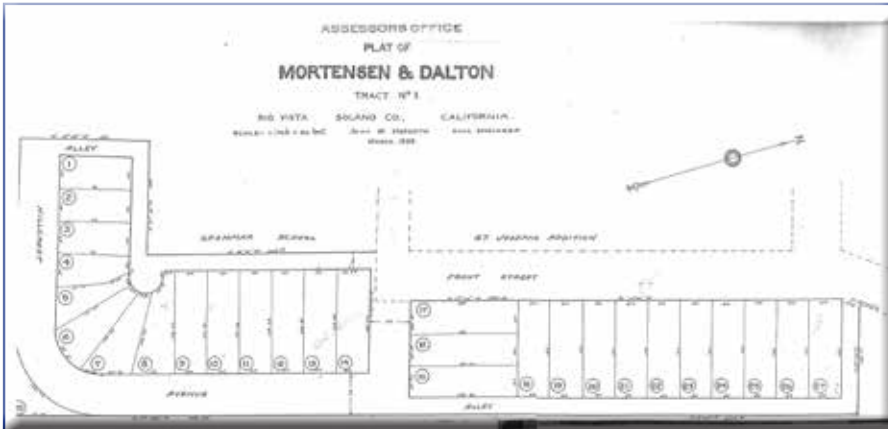
and fifteen fronted Hillcrest Avenue. It took several years before homes started to be erected on the lots. Of the lots, which faced Front Street: one home was built in 1926; three in



*Mortensen Court - South Fourth Street circa 1933.*



*Mortensen Court - South Fourth Street circa 1933.*



*The site map for Mortensen & Dalton Tract No. 1 development.*

1927; two in 1930; and one home in each of the following years, 1931, 32, 35, 36, 40, and 1950. Hillcrest Avenue was never completed and over the course of time block number 45 was reorganized. However, most of Mortensen & Dalton Tract No. 1 became a beautiful neighborhood.



*J.P. Mortensen, at Mortensen Court building site circa 1933.*

## 1930-1940

During the 1920's Mortensen invested in property around Rio Vista. During that time, he purchased lots 2, 3, 4 and 5 in Block 38, one of the blocks in the Hamilton Addition, located at the south end of Fourth Street, just past Rio Vista Joint Union High School.

For several years, Mortensen let the property sit. In the early 1930's Mortensen decided to construct seven units, with a courtyard, complete with pond, on the lots. In the mid 1930's when Mortensen Court was completed, it became a very fashionable rental unit, sought after by young married couples for their first homes.

## 1940-1955

In 1940 Mortensen turned 75 and by this time his construction days were over. He continued to reside in Rio Vista until his death on December 24, 1955 at the age of ninety.

Jens Peter Mortensen's legacy of building and remodeling fine homes will always be visible as one tours around Rio Vista, and he will always have a place alongside of other historically noteworthy local builders.



## The Veterans Memorial Hall Has been completely renovated!

*Available for Rent:  
Parties & Holiday Celebrations  
Reunions & Weddings & Business Meetings*



*Reasonable rates, AV equipment available  
banquet tables & chairs, new kitchen*

American Legion Post #178  
Veterans Memorial Building  
610 St. Francis Way, Rio Vista



Contact: 707-374-6554  
americanlegion178ca@gmail.com  
www.americanlegionpost178.org

American Legion was created by Congress to support US veterans.  
Rio Vista Post #178 is serving veterans and the Rio Vista Community

## LIRA'S SUPERMARKET

*Rio Vista & South Lake Tahoe*



**OPEN 7 DAYS A WEEK 7 A.M. TO 9 P.M.**

609 HIGHWAY 12, RIO VISTA (707) 374-5399  
2977 HIGHWAY 50, SOUTH LAKE TAHOE  
(530) 577-5399

Every Thursday is Senior Discount Day  
Home Delivery Service Available  
(Rio Vista Location Only)

Large Selection of Liquor and Wine  
Full Deli Department  
Full Service Meat Counter  
Fresh Produce and Flowers

*Our Commitment is to Our Customers and Our Community*

## The Point Restaurant

120 Marina Drive, Rio Vista, CA 94571  
(707) 374-5400  
We accept reservations

Monday - Thursday 11-9  
Friday 11-10  
Saturday 10-10  
Sunday 10-9

Cater your event on or offsite  
For more information call or email us at  
Banquetsatthepoint@gmail.com

## TORTILLA FLATS 3

The Authentic Mexican Cuisine

Open Monday- Sunday  
7:00 AM- 9:00 PM  
Friday- Saturday  
7:00 AM- 10:00 PM

646 STATE HWY 12  
Rio Vista, CA 94571

To Go Orders please call ahead:

(707) 374- 2564



## Burgerlicious



Rio Vista's Premier  
Burger Place  
Featuring 12 different  
Burgers

Open 7 Days a Week  
Hours: 9 am to 10 pm

650 Highway 12

707-374-2020



# Winter & Spring Sturgeon Fishing In The Net with Fish'n Dog Drew

By Drew Gidlof

Photo by Jan Vick

*Drew Gidlof, owner of Fish'n Dog Drew Guide Service, offers his expertise on fishing the vast waterways of the Delta.*

Now that the fall and winter Salmon runs are winding down, it is time to start concentrating on winter Striper, or Sturgeon fishing. Last year we wrote about winter Striper fishing so we thought this would be a great opportunity to focus on Sturgeon fishing opportunities.

Let's begin reviewing the current California Department of Fish and Wildlife rules and regulations for Sturgeon fishing as outlined in California Code of Regulations Title 14, Section 27.90. Green Sturgeon are listed as a threatened species, so it is illegal to take them at all. White Sturgeon are open year-round, with a daily bag and possession limit of one fish that must be between 40 inches and 60 inches measured from nose tip to the tail fork. The annual limit is three. Once taken, the fish must be tagged and recorded on your Annual Sturgeon report card. Short or oversized Sturgeon must be released unharmed immediately; note that white Sturgeon greater than 68 inches fork length may not be removed from the water prior to their immediate release. No snare may be used to assist in taking Sturgeon. Only one single barbless hook may be used. Do not forget to complete your on-line Sturgeon card reporting with the Department of Fish and Wildlife each year, even if you did not catch a Sturgeon during the year.

White and Green Sturgeon are native to California and are often located in the same habitat. They are anadromous, meaning they move from the salt and brackish water to freshwater to spawn. Sturgeon reach sexual maturity at around 15 years old, and can live to be 100 years or older. Mature females spawn every 2 to 4 years. Large females produce more eggs than their smaller counterparts, with high water flow years leading to higher sturgeon spawning success. Long life, late sexual maturity and infrequent spawning contribute to the vulnerability of the sturgeon population.

The primary difference between White and Green Sturgeon is their color, with "white" having a silver/gray skin and "green" having a green stripe visible on its belly. Other differences are the white's somewhat flat head and barbels

further from the mouth versus the green's longer and more pointed head.

When fishing from a boat we have had the best luck looking for large flat areas in 20 to 45 feet of water, ideally with a silt bottom and minimal rocks to take advantage of the Sturgeon's feeding pattern.

Target areas are along a slow edge of the current break or on the outer edge of the eddy of swirling water. If the flats are not working, you might try an area that has sloping features to it, or a nice hole in the area of your flats. Sturgeon are known to move from one location to another as they feed.

Over the years, a favorite location for fishing has been just south of the Rio Vista Bridge between Sandy Beach and Sherman Island. Check

out the areas around Channel marker 8, 9 and 14, between the shipping channel and shore in 30 to 35 feet of water. Do not anchor up in the shipping channel, as this area is restricted to large cargo ships. Scanning these areas with an on-board GPS provides an outline of what to look for when searching new locations to fish.

The hook rigging is an important setup consideration because Sturgeon have rigid, sharp ridges that run from their mouth to their tail. This is the main reason we advocate extra awareness when dogs and small children are fishing with you. These ridges, or spikes, can cause a lot of damage quickly. Use a wire Sturgeon leader that cannot be cut easily and make sure you have a long enough leader. Generally three to four feet with a good size heavy duty barrel swivel on one end and your hook on the other will work well.

As for bait, some of the favorites are shad, eel, and uncured salmon roe/eggs, the fresher the better. Do not be afraid to add some extra scent to add to the attraction of your bait. Finally, once you cast your line and the weight has settled on the bottom of the river, take advantage of a "teeter" system to balance the pole. Ideally, the pole should balance in the "V" of the teeter system while allowing the line to be taken with minimal resistance.

*In closing, "remember to keep those fishing lines tight", and "take time to take a child fishing..." Drew and Boonie the river dog hope to see you on the water this fall!*





## Fish'n Dog Drew Guide Service

Over 30 Years of Fishing Experience, so You Never Worry About The Basics

We offer a full service package for fishing. You only need to bring your fishing license, food, drinks, and clothing appropriate for the current weather conditions.

Fully Licensed, Bonded & Insured  
**916-919-4881**

USCG Captains License #3660878 • CA. State Fish & Wildlife Guide License #1000399



# Shanny Mac's

*New Location, Same Great Food!*

Story by Teri Malkin

Shanny Mac's, an espresso café with an extended menu, is a gem just waiting for you to discover.

Shanny Mac's Espresso Café recently moved to its new location in the Trendsetter's parking lot at the corner of Highway 12 and Virginia Street. The owner, Shannon McPherson, has an Advanced Culinary Degree from San Joaquin Delta College and has



worked as a Sous Chef and Executive Chef for 9 years. She describes herself as a people person; there is always a smile on her face. Her love of cooking came from her Grandmother who was from the South and Pastry Chef at the local bakery in Rio Vista. Shannon has always wanted a Food Truck and originally launched hers September 2016 at the Delta Farmer's Market on the southeast corner of Highways 12 and 160.

Shanny Mac's excellent coffee is from White Cup Coffee Roasters in Lodi and the espresso machine is from Barcelona Spain. White Cup Coffees are organic and come from all over the world. Mochas, Lattes, Caramel Macchiato and Cappuccino are the main coffees served. If you are adventurous you may want to try the Lavender Latte, a very subtle and interesting flavor. The fresh baked goods and a nice cup of coffee are a great way to start your day.

If you want a good old-fashioned Hamburger or Hot Dog, this is the place to come. There are daily Sandwich Specials: Rubens, BBQ, Pastrami, Grilled Chicken and Salmon just to name a few. You will want to sample them all. Now that it is cooler, there are daily Soup Specials, Hearty Vegetable Beef, Split Pea, Turkey Rice and Clam Chowder. For a lighter fare, salads are also available.

Shanny Mac's hours are Monday – Friday 6:00 am – 4:00 pm, Saturday and Sunday 8:00 am – 4:00 pm. Call ahead for your order at (707) 374-5700 and it will be ready when you come to pick it up.

# Agnello's Corner Deli

*Just like Grandma Used to Make!*

Story and Photo by Teri Malkin

Agnello's Corner Deli at 400 Main Street is now open daily from 6:00 am to 5:00 pm. Owner, Jolly Heshmaty was raised in Rio Vista until she was a senior in high school. Her family moved to Lamoore for her father to work on the Naval Air Station. She moved back to Rio Vista eight years ago. When asked why she opened a Deli, Jolly responds, "I'm a people person." Previously, Jolly owned retail clothing and home décor gift stores.

The décor evokes an Italian Grandmother's Farm House Kitchen with many antiques.

The Deli offers pre-designed sandwiches like the New Yorker Pastrami, Palermo Mortadella, Frontier Steve's Reuben, River Breeze Turkey and Humphrey Tuna, just to name a few. Sandwiches range from \$7.95-\$8.95. You can also build your own from the list of deli meats and cheeses. The delicious breads are from Maggior's Italian Bakery.

Come in and enjoy a pastry or sandwich with a wonderful cup of Boyd's Coffee. Established in Portland, Oregon in 1900, Boyd's is one of the oldest family-owned coffee companies in the world. The coffee is roasted and ground the way it was 100 years ago.

If you are looking for a gift, there are Italian food items available to make a basket, various Granzello olives, Bruno's peppers and vinegar, pasta and sauce bases. You can also purchase the deli cheeses and meats or have a platter created for your next party.

To save time, call ahead with your "to go" order to (707) 374-1300.





**Open 6AM – 2PM**

Breakfast and Burgers  
served all day



1000 Hwy. 12, Rio Vista  
*at the only stop light in town*  
plenty of parking ph: 707-374-2695  
[www.hwy12diner.com](http://www.hwy12diner.com)



8 beers on tap · full bar service  
Lunch & Dinner menus

***Rio Vista's landmark restaurant  
A den for hunters, cowboys  
good ol' boys and families***

open 10AM – 12AM  
143 Main St. ~ Rio Vista



*Rio Vista*  
**Visitor Center  
& Art Gallery**

33 N. 2nd St. Rio Vista, CA.  
Open weekdays 9-4  
weekends 11-3



**Featuring quality  
Art & selected Crafts  
by local Artists**

[facebook.com/riovistaart](https://facebook.com/riovistaart)

**RioVision**  
bridge to the future





# Event Calendar



**Fri, Jan 19, 4:30 PM**  
**American Legion**  
**Crab Feast**  
 Veteran's Memorial Hall  
 610 St. Francis Way

Sponsored by the American Legion, enjoy delicious all you can eat fresh cooked crab at the 4th Annual

American Legion Crab Feast. The event benefits the Cub/Boy Scouts of America and American Legion Post 178 of Rio Vista.

*Note: This event is contingent upon availability of crab in the northern crab fields, which is unknown at time of print. Watch the newspaper for event specifics.*

**Sat, Jan 27, 10:00 AM - 2:00 PM**  
**Semi-Annual Children's Clothing Exchange**  
 D.H. White School Tapella Auditorium, 500 Elm Way

St. Brigid's Episcopal Church holds its semi-annual Children's Clothing Exchange in the multipurpose room at D.H. White Elementary School. Bring your child's outgrown clothing to exchange for free usable garments.

For more info, please contact Linda Jensen at (707) 374-5542 or [lmjensen.rio@gmail.com](mailto:lmjensen.rio@gmail.com).

**Sat, Feb 3, 11:00 AM - 3:00 PM**

**Isleton Asian New Year Celebration**  
 Main Street, Isleton



Relive the historical tradition of Isleton's Chinese New Year and celebrate Isleton's diverse heritage at the annual Asian New Year Celebration. The event includes Lion Dancers, Taiko Drummers, Sakura

Minyo Doo Koo Kai Dancers, Sake tasting, Wine tasting, Sushi making demonstration and activities for children.

**Sat, Feb 10, 6:00**

**Princess Ball**  
 Veteran's Memorial Hall  
 610 St. Francis Way



Treat your little princess to an enchanting evening of dress up, dinner and dance. The event is a joint effort of Rio Vista Lions and Soroptimist International of Rio Vista. Tickets are \$10.00 per couple, but are limited so purchase yours early at Lira's Supermarket.

**Sat, Mar 3, 1:00 & 6:00 PM**

**LUNAFEST®**  
 Veteran's Memorial Hall  
 610 St. Francis Way

LUNAFEST® film festival sponsored by Soroptimist International of Rio Vista, showcases short films by, for and about women. Enjoy matinee or evening showings. Tickets are \$35.00, available from Soroptimist members, at Books Rio V and Pets 4 All downtown, or online at [https://lunafest\\_rv\\_2018\\_matinee.eventbrite.com](https://lunafest_rv_2018_matinee.eventbrite.com) or [https://lunafest\\_rv\\_2018\\_evening.eventbrite.com](https://lunafest_rv_2018_evening.eventbrite.com). For more info about LUNAFEST® visit the Soroptimist web site at [www.siriovista.org](http://www.siriovista.org), Facebook page or contact Stacia Olsen at (916) 716-4997 or [s.olson@californiadelativing.com](mailto:s.olson@californiadelativing.com).



**Sat, Mar 10, 5:00 - 7:30 PM**

**CARE King of the Kitchen**  
 Veteran's Memorial Building, 610 St. Francis Way

Over 30 aspiring chefs compete at this annual event. Enjoy a delicious "tasting," then vote for your favorite chef in this friendly competition benefiting Rio Vista

CARE. Men folk, come out and compete for the King's crown! Tickets are \$30.00 or \$25.00 with a donation of a non-perishable item for the Rio Vista Food Pantry. Call (707) 374-5243 for tickets or get them at the CARE office at 628 Montezuma Street. Only 120 tickets are available so plan early to attend.



**Mar 15 & Apr 19, 4:00 - 7:00 PM**

**Third Thursday**  
 Downtown Rio Vista

Third Thursday kicks off after a winter hiatus. Experience art, entertainment, fun activities and the Rio Vista Museum while leisurely shopping our quaint downtown.

**Saturday, Mar 24, 10:00 AM**

**Easter Egg Hunt**  
 City Park

The Rio Vista Leo Club hosts an Easter Egg Hunt at City Park for children ages 2-13. The Leo Club is a community service organization for young people supported by the Rio Vista Lion's Club.





**Ray Sanghera**  
Owner

Store #14504

660 State Highway 12  
Rio Vista, CA 94571  
Cell: 408-444-0277  
Store: 707-374-4444  
Raman.Sanghera13@gmail.com



**Andrea Brimmer**  
Owner and Chief Stylist

To make an appointment:  
**707-374-3032**

125 Sacramento Street  
(across from the post office)  
Rio Vista, CA 94571



**Gene Resler** REALTOR®  
Broker

www.reslerrealty.com

540 S Second Street  
Rio Vista, CA 94571  
Cell: 707.486.7642  
Fax: 707.375.1626  
Email: resler@citlink.net  
DRE#: 01028536



resler realty



**M&M and Associates**

39 N. Front Street  
Rio Vista, CA 94571  
**Direct (707) 334-0699**  
E-Fax (209) 846-7072  
E-mail Rnelson@c21mm.com  
www.riovistahomepro.com

Each Office Independently Owned and Operated

**Ralene Nelson**  
REALTOR®  
CDPE, GRI, SRES  
MLS Lic# 01503588



Producer  
2013  
2014  
2015  
2016



**BOOKS RIO V**  
ALL SORTS OF USED BOOKS

Bookworms Welcome

187 Main Street  
Rio Vista, CA 94571  
707-374-5650  
bookstore@booksriov.com

Hours of Operation:  
Tuesday - Friday 11 - 4  
Saturday 10-3  
Closed Sunday & Monday

*discover  
Rio Vista*

Buy an Ad in  
"Discover Rio Vista"  
Magazine!

We distribute 11,000 magazines three times a year to Rio Vista and the entire Delta.

Our rates are reasonable and you get a discount for subscribing for a year - 3 editions

Want to Expand Your  
Business?  
Reach more People?  
If so.....

Size	1 edition	2 editions	3 editions
Bus Card	\$95	\$171	\$228
1/4 inside pgs	\$155	\$279	\$372
1/2 inside pgs	\$300	\$540	\$720
1/4 glossy	\$180	\$324	\$432
1/2 glossy	\$340	\$612	\$816
1/4 gl cover	\$200	\$360	\$480
1/2 gl cover	\$375	\$675	\$900

To place an ad contact:  
Carolyn Axbell:azbellc@yahoo.com  
Sandy Angus: sandrasangus@yahoo.com

**RIO VISTA MUFFLER**



**HITCH & WELDING**

Approved  
Auto Repair

**Bob & Dana Lapp**



Auto Repair / Alignment / Tires / Custom Exhaust  
Hitches \ Wiring \ Brake Controllers \ Trailers Repair \ RVs

Ph 707-374-2484  
Fax 707-374-5939



**1105-D Airport Rd**  
**Rio Vista, CA 94571**

**D&S press**



**Dennis Dooley**  
President

**1105-A Airport Road**  
**Rio Vista, CA 94571**

**707-374-2442**  
**209-321-6310 Cell**  
**707-374-2452 FAX**

dspress08@yahoo.com  
www.ds-press.com





280 N Front St  
 Río Vista  
 At the foot of the Río Vista Bridge  
 Sales, Service and Parts

Sales: M - F, 8-6; Sat 9-5; Closed Sunday  
 Service: M - F, 7 - 5:30; closed Saturday & Sunday  
 Parts: M - F, 7 - 5:30; Closed Saturday & Sunday  
 800-669-1329 707-374-6317

Shop on the Web!  
[www.DriveAbel.com](http://www.DriveAbel.com)

## Petals On Main

Flowers, Gifts and so much more!

All occasion florist: birthday, sympathy,  
 get well, weddings and events,  
 or just because...

Flowers by the stem and grab 'n go bunches!

Balloons Truffles and Chocolates  
 Cards Potted Plants  
 Candles Candy/Money Bouquets

Unique Gifts by Local Artists and Crafters

**707-374-3300**

122 Main Street  
 Rio Vista

[petalsonmain@comcast.net](mailto:petalsonmain@comcast.net)  
[web: petalsonmain.com](http://web:petalsonmain.com)

(See our reviews on Yelp)



## Shafer Real Estate

Your Trilogy Resale and Rental Experts....

Nobody Knows Trilogy Homes Better!

[shaferrealestate@frontiernet.net](mailto:shaferrealestate@frontiernet.net)

707-374-5222



**Diane Shafer**  
 Owner / Broker  
 707-328-5277  
 Lic: 01390213



**Debbie Werter**  
 Realtor Associate  
 707-673-7667  
 Lic: 01125366



**Drew Haisley**  
 Realtor Associate  
 925-482-4556  
 Lic: 00997350



**Charlene Fowler**  
 Realtor Associate  
 707-372-0203  
 Lic: 01988913

**121 Montezuma Street, Rio Vista, CA 94571**

View listings, search for properties, get Trilogy maps and more at:

[www.ShaferRealEstate.net](http://www.ShaferRealEstate.net)