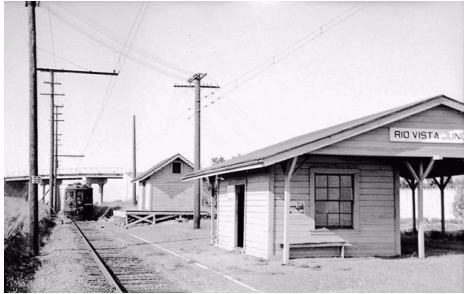


# ALL ABOARD FOR HALLOWEEN FUN

By Teri Malkin    Photos by Jan Vick, Teri Malkin & Western Railway Museum

Fun for all ages! Experience California as it was 100 years ago. With over 50 historic cars on display, 22 miles of track and 22 acres, the Western Railway Museum is ideal for families and group outings. The Museum features historic railway exhibits, vintage streetcar and interurban train rides, a large shaded picnic area, Museum Store for train themed items, library archives, and Depot Cafe.



*Rio Vista Junction, a stop on the Sacramento Northern from 1923-1940, is home to the Western Railway Museum.*

Plan your visit to the Pumpkin Patch Festival for the 2nd, 3rd or 4th weekends of October. The museum opens at 9:30 a.m. The first train departs at 10:00 a.m. departing every 30 minutes until 4:00 p.m. Once there enjoy games, live music, hayrides and a petting zoo. Take home a pumpkin or two, test your strength with the pumpkin launcher or explore the huge hay bale fortress. Enjoy the smell of grilled hot dogs and hamburgers sold by the Rotary Clubs of Dixon, Cordelia-Fairfield and Suisun. You don't want to miss the Soroptimist of Rio Vista vast assortment of baked goods the 17th, 18th, 25th and 26th. These delicious treats should not be missed whether you eat as you wander the grounds or take home to have later.



*Stop by the Soroptimist booth for amazing baked goods!*

The Western Railway Museum is located on Highway 12 between Rio Vista and Suisun. The museum is built along the former mainline of the Sacramento Northern Railway. The collection focuses on trolleys, as it is primarily a museum of interurban transit equipment. The Museum has the largest collection of Sacramento Northern Railway equipment in existence and operates a line of the former Sacramento Northern as a heritage railway with scheduled excursions for visitors.



*Ride a historic electric train on the five mile track to the Pumpkin Patch Festival in scenic Gum Grove Station, a wooded glen far from the trappings of modern life.*

In the Traction Lab Exhibit you explore transportation in the 21st Century. Hands on exhibits include: car vs train, how do electric trains work, and what can you power? Electric trains use electricity from overhead electric wires to power their motors. They can easily use renewable energy sources such as wind and solar rather than relying on fossil fuel or wood.



*Visitors say the conductors are awesome!*

The museum is operated by the Bay Area Electric Railroad Association (BAERA), a non-profit organization whose mission is to preserve the regional heritage of electric railway transportation as a living resource for the benefit of present and future generations.

All aboard. Take the train for Halloween fun!